

selected works by

ELI H. BECKMAN



# PHILOSOPHY

If I couldn't be an architect, I'd be a politician.

What draws a person to these two seemingly disparate fields? Simply put, it's the desire to make things work well. Architecture and government share a set of virtues that make an individual successful in both fields. A good public servant is disciplined and organized; he thinks in terms of systems and strives for efficiency, using the tools at his disposal to create smart policies and institutions that meet the varied needs of the people he serves.

An architect does much the same thing. He turns the complexity of a building into an artfully unified entity that performs its many functions to the fullest. He endeavors to juggle competing demands without sacrificing beauty or comfort.

Of course, there are important differences. A person can choose not to make politics part of their life—indeed, many do. Architecture, on the other hand, is inescapable. Born from the human instinct to carve out our own space in the world, it permeates every aspect of our lives. If we pay our taxes, we can ignore politics,

but almost everything we do takes place in architecture. It's a critically important field because it affects us every day in ways overt and intimate; it's the setting of life.

That's why I like architecture. What other profession creates works of art that are indispensable to daily life? Most art may be a luxury, but not architecture. Architecture is a necessity, and the architect's job is to make it *feel* like a luxury.

As a student of architecture, I'm learning how to do just that. I've developed certain design principles; things line up. Be subtle, especially with lighting. Give people plants. Give them water. Know when to suspend the rules.

The works in this portfolio show how I apply those principles in designing and representing spaces. Through each project, I sought to convey my interpretation of the simplest imperative of architecture: a building must work well, and look good doing it.

I'm excited to show you what I've learned so far.

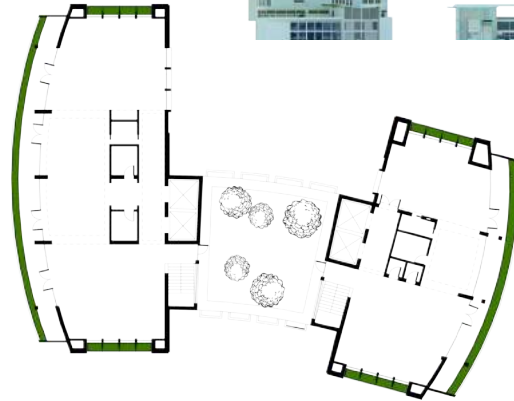
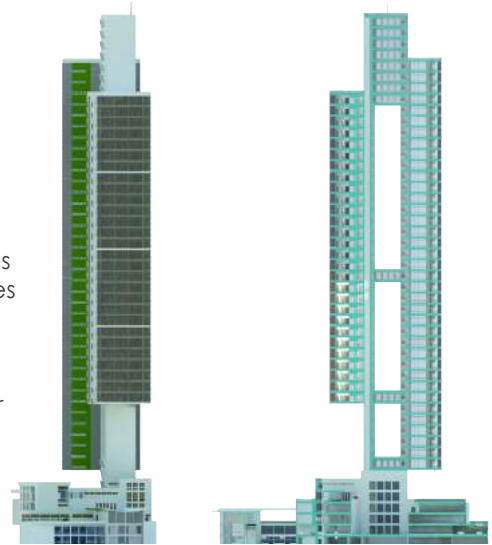
Eli Beckman

# ENVOY REFINED



At 720 feet tall, this bold tower provides 620,000 square feet of US embassy program including offices, archives, and residences.

Tools have been employed at every scale to passively create comfort in muggy Singapore: the tower's massing funnels breezes through the office space and bathes the interior in natural light, while the facade panels and ample rooftop gardens collect rainwater for use. Shaded balconies protect the outer faces of the tower from the sun.



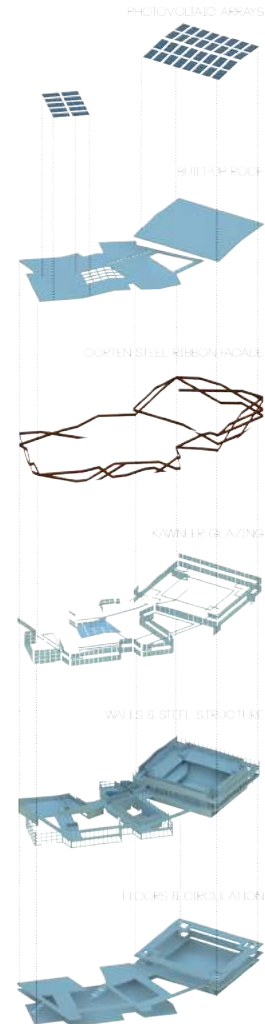
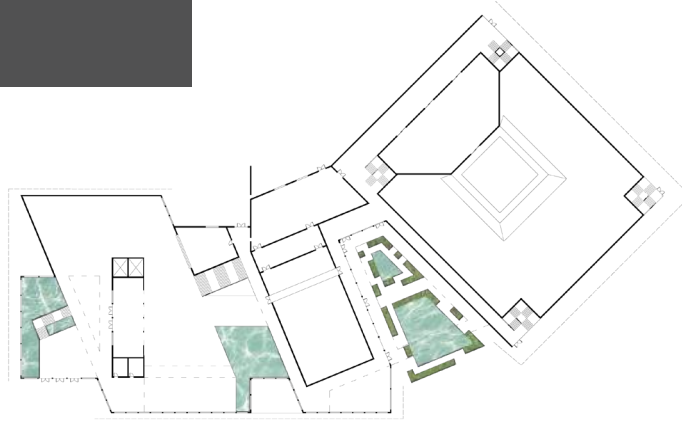




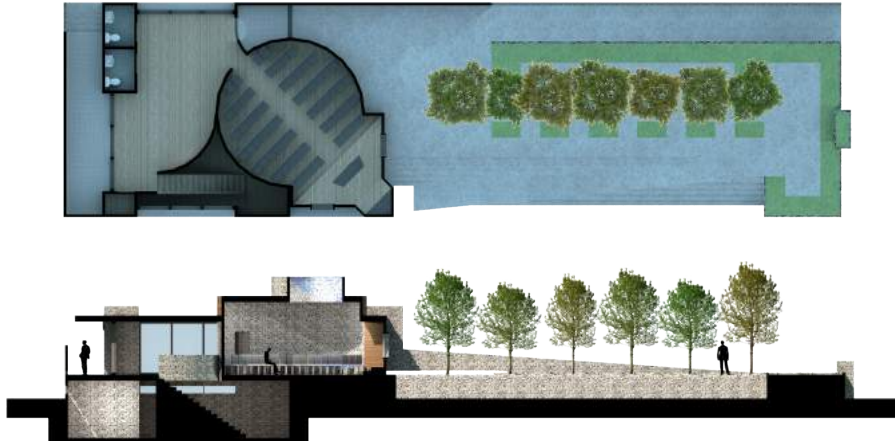
# PRESIDIO HALL

Auspiciously poised on the edge of the San Francisco Bay, this concert and event hall boasts two auditoriums and a generous foyer that doubles as an art gallery.

The building is designed as a low-slung, state-of-the-art venue that turns its back to a noisy freeway while opening onto vistas of the bay. Aesthetically, it blends into the site while taking cues from the nearby Golden Gate bridge.



# JESCHURUN



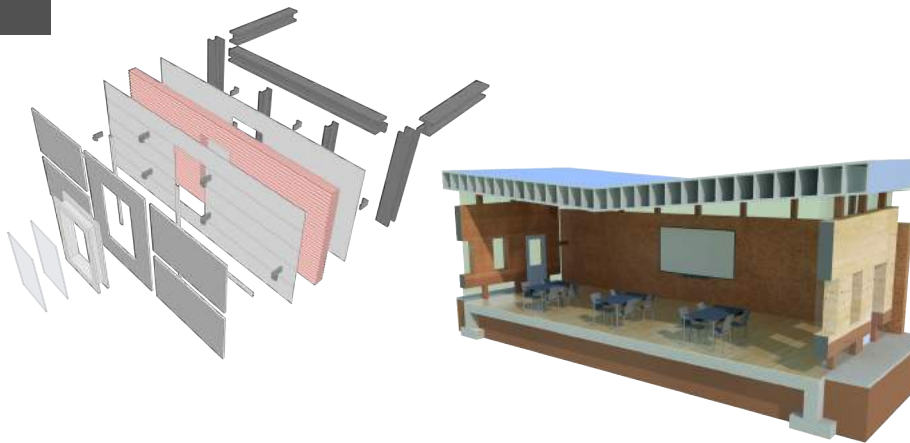
This small synagogue in the heart of Stockholm is a contrast of human and holy, public and private, pedestal and shrine. The building's social areas are integral to the treed plinth that stretches before it, while the sanctuary is a clearly distinguished drum that rests on top of the base.



# TEACH

Teach is a suburban charter school is nestled into the gentle slope of a grassy field in California's warm central coast. The program was carefully allocated over two offset levels to facilitate a sense of community while maintaining appropriate age separation.

Thermal mass was widely utilized to passively regulate indoor temperature, while overhangs and light shelves balance natural lighting in classrooms and offices. Natural finishes were used to create an environment that isn't unduly formal or institutional.





# FURNITURE

Above: a modernist desk designed for a client's study. Steel structure, stone desktop with glass inlays, mahogany drawers.

Right: a pair of bespoke wooden benches purpose-built for a concurrent landscaping job. The client specified simple lines and an unfinished feel.

In keeping with their surroundings, (see next page) these benches maintain a Zen cleanliness in form, as contrasted by the forgivingly rustic nature of their materiality (reclaimed fir and welded steel left to rust).





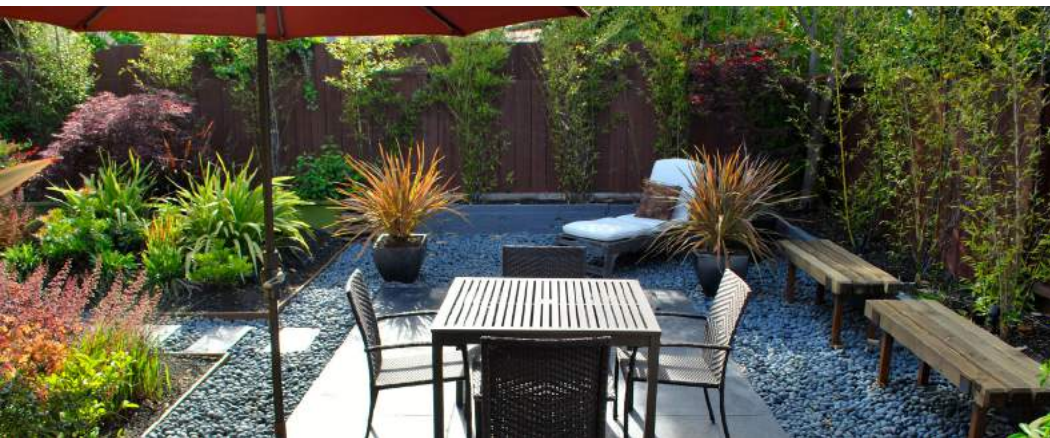
# LANDSCAPE



An extensive redesign of a residential backyard near San Francisco.

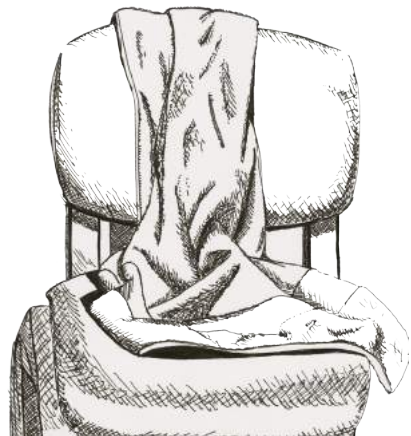
The sunbathed dining patio is surrounded by a tranquil sea of stones, with lush gardens beyond. A screen of black bamboo shields the yard from gusty winds and provides privacy.

With an eye to both aesthetics and ecology, the garden beds were planted with low-water flora in a range of reds and greens. These gardens are split by a path leading from the bright dining area to a shaded lawn.





# HAND DRAWING



# SOULPTURE

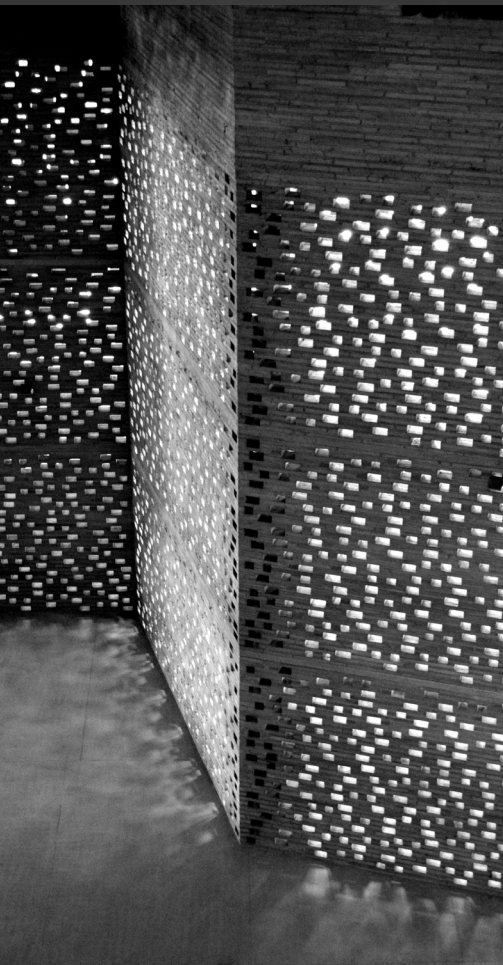


Clockwise from bottom left: reflections in steel, 2013; shadows in wood, 2014; paraSITE, wood and steel, 2012 (published in the San Luis Obispo Tribune).





# PHOTOGRAPHY







Thank you for viewing.



[www.elibeckman.com](http://www.elibeckman.com)

+1.415.272.6132  
[eb@elibeckman.com](mailto:eb@elibeckman.com)